

The BiomolBiomed publishes an “Advanced Online” manuscript format as a free service to authors in order to expedite the dissemination of scientific findings to the research community as soon as possible after acceptance following peer review and corresponding modification (where appropriate). An “Advanced Online” manuscript is published online prior to copyediting, formatting for publication and author proofreading, but is nonetheless fully citable through its Digital Object Identifier (doi®). Nevertheless, this “Advanced Online” version is NOT the final version of the manuscript. When the final version of this paper is published within a definitive issue of the journal with copyediting, full pagination, etc., the new final version will be accessible through the same doi and this “Advanced Online” version of the paper will disappear.

SUPPLEMENTAL DATA

Deep learning and inflammatory markers predict early response to immunotherapy in unresectable NSCLC: A multicenter study

Lei Yuan^{1,2#}, Qi Wang^{1,2#}, Fei Sun^{3#}, Hongcan Shi^{1,2*}

¹Department of Thoracic Surgery, Northern Jiangsu People's Hospital Affiliated to Yangzhou University, Yangzhou, China;

²Medical College, Yangzhou University, Yangzhou, China;

³Department of Thoracic Surgery, The Affiliated Taizhou People's Hospital of Nanjing Medical University, Taizhou, Jiangsu, China

*Correspondence to **Hongcan Shi**: shihongcan@yzu.edu.cn

#Lei Yuan, Qi Wang and Fei Sun contributed equally to this work.

DOI: <https://doi.org/10.17305/bb.2025.12324>

Full article is available at the following link:

<https://www.bjbms.org/ojs/index.php/bjbms/article/view/12324/3927>

Table S1. Analysis of clinical features

Feature_name	OR	OR lower 95%CI	OR upper 95%CI	p_value	OR	OR lower 95%CI	OR upper 95%CI
EGFR	0.560	0.505	0.621	<0.05	0.632	0.571	0.7
TNM	0.775	0.679	0.884	<0.05	0.873	0.784	0.971
modality	0.777	0.538	1.123	0.258			
ECOG	0.881	0.811	0.957	<0.05	0.967	0.906	1.033
NLR	0.921	0.891	0.951	<0.05	0.982	0.949	1.016
pathological_type	0.925	0.817	1.047	0.302			
treatment_lines	0.960	0.875	1.055	0.478			
smoking	0.969	0.853	1.100	0.677			
BMI	0.996	0.980	1.012	0.706			
type	0.996	0.959	1.034	0.847			
SIINI	0.998	0.997	0.998	<0.05	0.999	0.998	1.0
PLR	1.000	0.999	1.000	0.569			
ALI	1.000	1.000	1.000	0.542			
SII	1.000	1.000	1.000	0.275			
age	1.004	0.997	1.011	0.347			
PNI	1.007	0.996	1.018	0.272			
medication_regimen	1.027	0.916	1.151	0.704			
basic_disease	1.097	0.966	1.247	0.232			
PD_L1	1.104	1.018	1.197	<0.05	1.038	0.977	1.103
gender	1.298	1.096	1.536	<0.05	1.17	1.03	1.328

Table S2. Sensitivity analysis of clinical features.

	Feature	AUC	Sensitivity	Specificity
1	gender	0.707	0.842	0.571
2	EGFR	0.791	0.868	0.714
3	pathological.type	0.633	0.553	0.714
4	TNM	0.6	0.342	0.857
5	SIINI	0.842	0.684	0.857

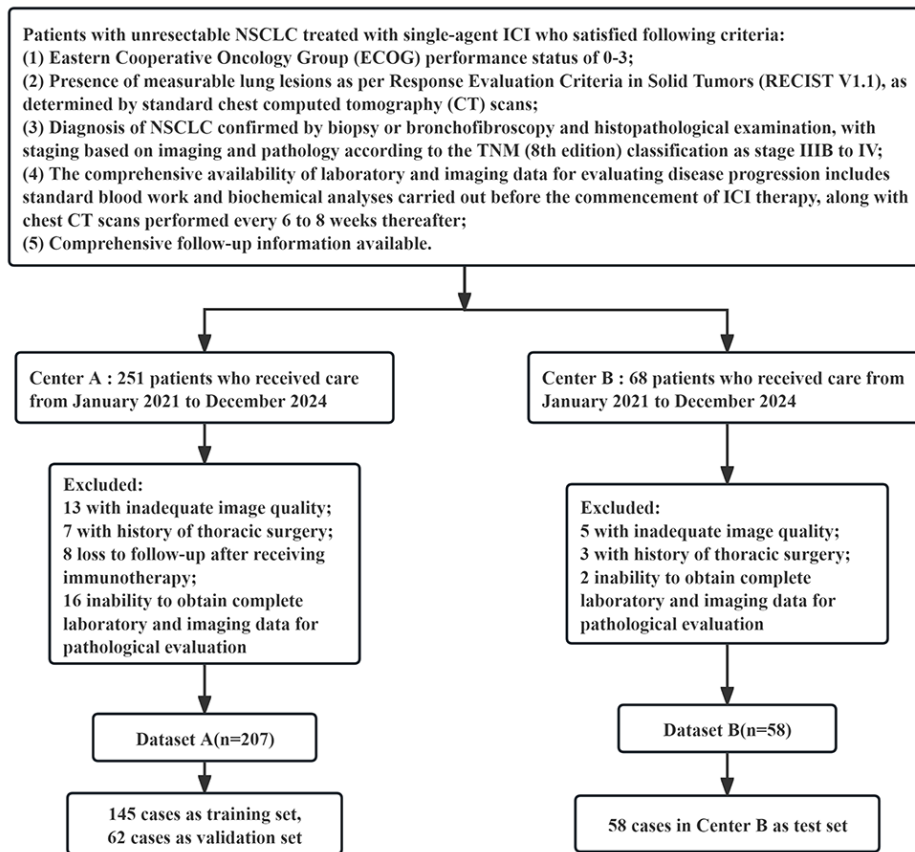


Figure S1. Research flow chart

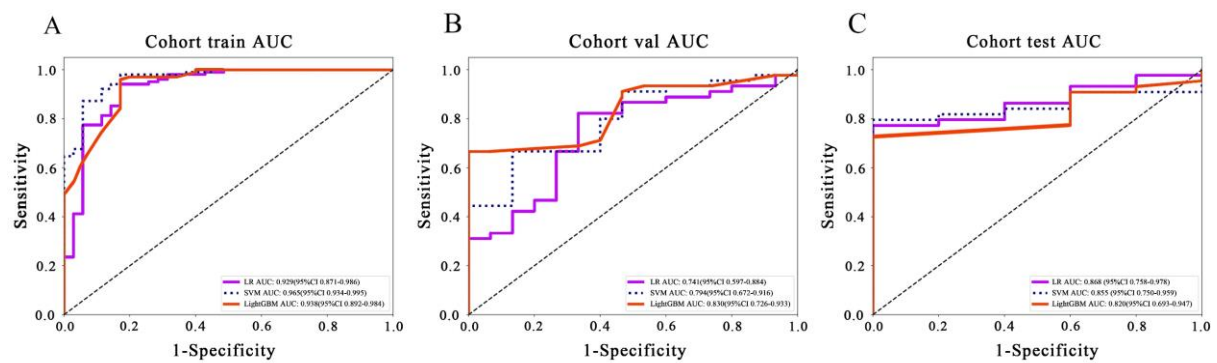


Figure S2. Illustration of the ROC curves for clinical model on different datasets: (A) training set; (B) validation set; (C) test set.

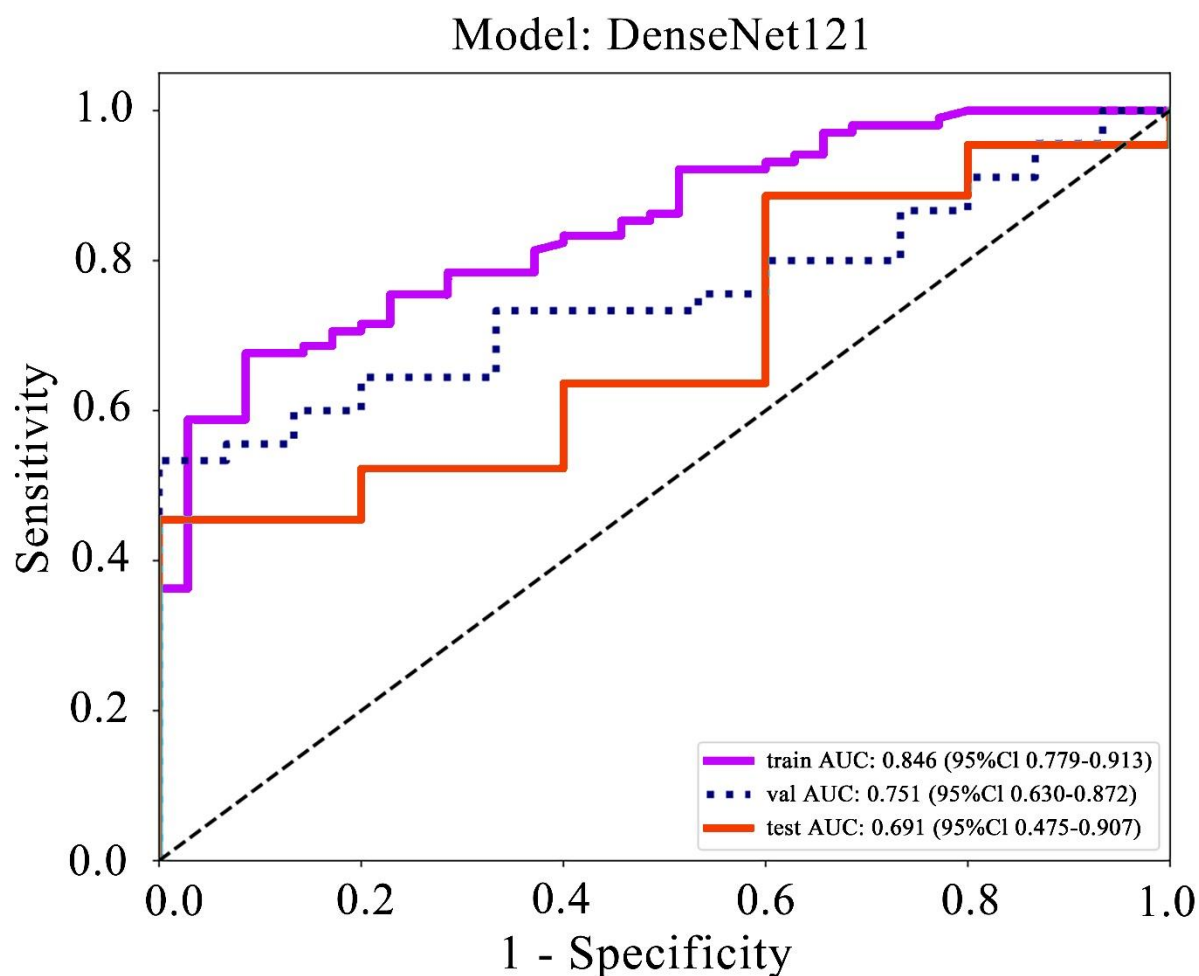


Figure S3. Illustration of the ROC curves for Deep Learning Signature on different datasets: (A) training set; (B) validation set; (C) test set.

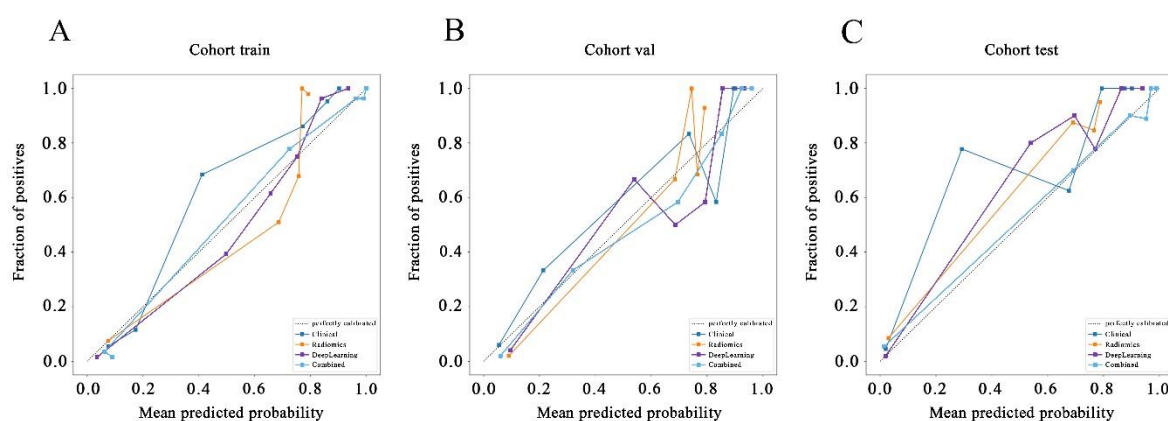


Figure S4. Calibration Curve on different datasets: (A) training set; (B) validation set; (C) test set.