

SUPPLEMENTAL DATA

Rajan et al: TUDCA and Syndopa in PD mouse model

TUDCA combined with Syndopa protects the midbrain and gut from MPTP toxicity in a Parkinson's Disease mouse model:

Immunohistochemical evidence

Mahalakshmi Rajan^{1,3}, Senthilkumar Sivanesan^{1*}, Kalpana Ramachandran², Pankaj Goyal⁴, Priya Palanivelu⁵, Anamitra Ghosh⁶, Rajagopalan Vijayaraghavan¹, and Smitha S Vasavan⁷

¹Department of Research and Development, Saveetha Institute of Medical and Technical Sciences, Chennai, India;

²Department of Anatomy, Sri Ramachandra Medical College and Research Institute, Chennai, India;

³Department of Anatomy, Sri Muthukumaran Medical College and Research Institute, Chennai, India;

⁴Department of Biotechnology, Central University of Rajasthan, Ajmer, India;

⁵Department of Anatomy, KMCH Institute of Health Sciences and Research, Coimbatore, India;

⁶Baylor College of Medicine, Houston, Texas, USA;

⁷Department of Anatomy, PMS College of Dental Science and Research, Thiruvananthapuram, India.

***Correspondence to** Senthilkumar Sivanesan: senbio@gmail.com

DOI: <https://doi.org/10.17305/bb.2025.12519>

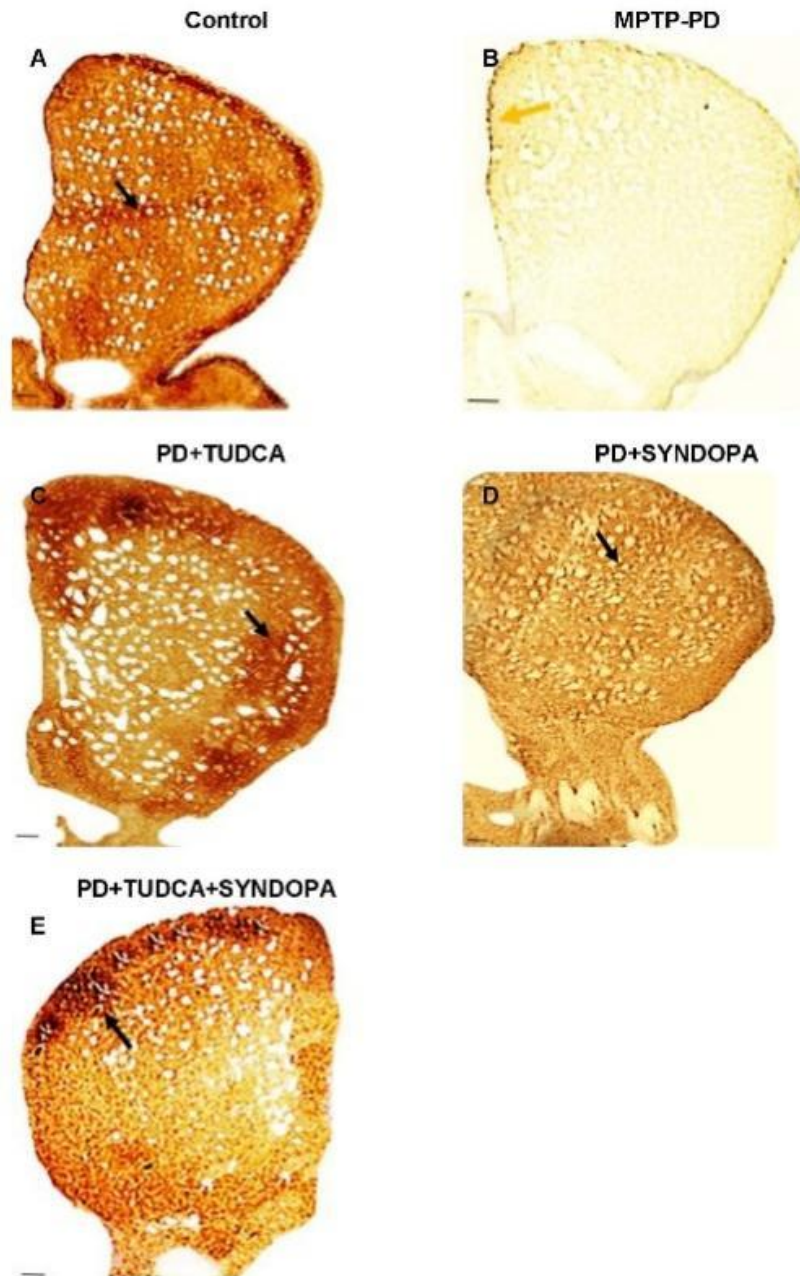


Figure S1. The representative images depict the immunoreactivity of TH positive fibres in the striatum of control and experimental groups (Scale bar - 200 μ m, Magification-200x).

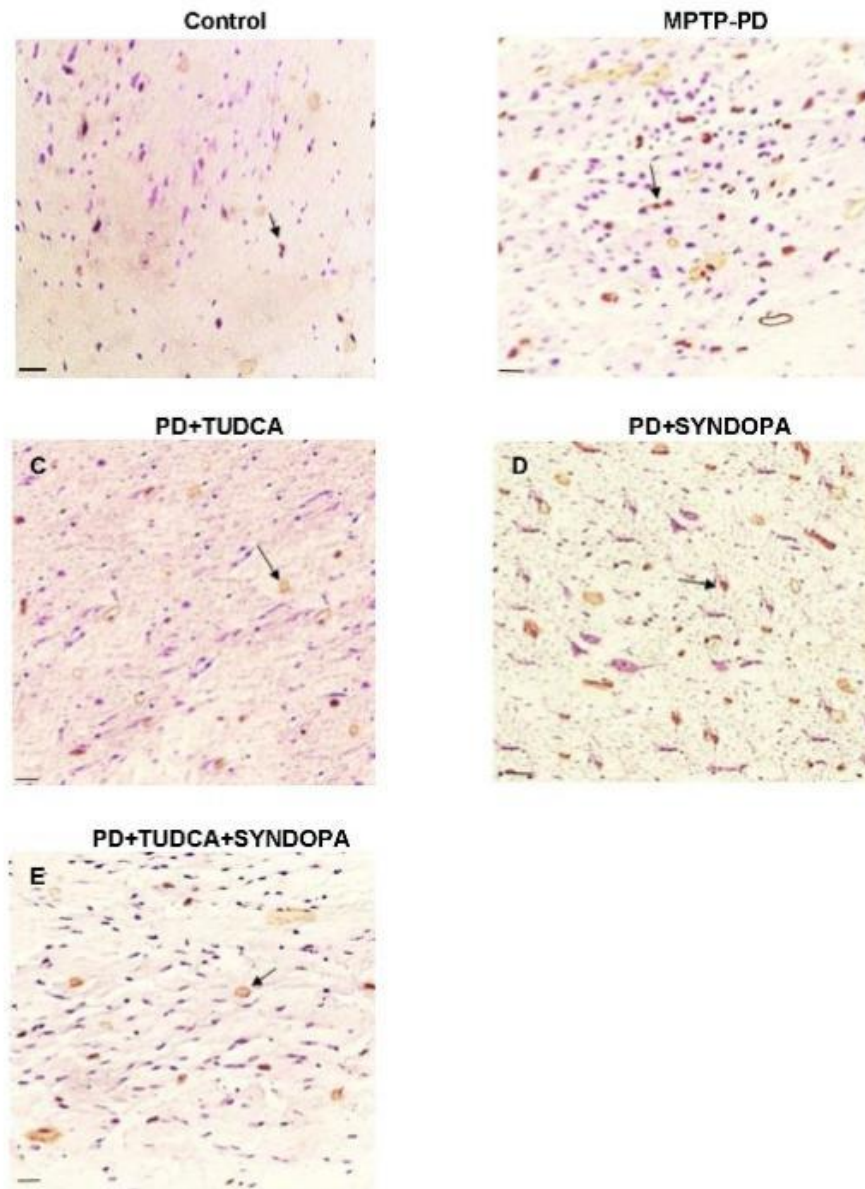


Figure S2. The representative immunostained sections depict the expression of NF- κ B positive cells in the striatum of control and experimental groups (Scale bar - 50 μ m, magnification-400x).

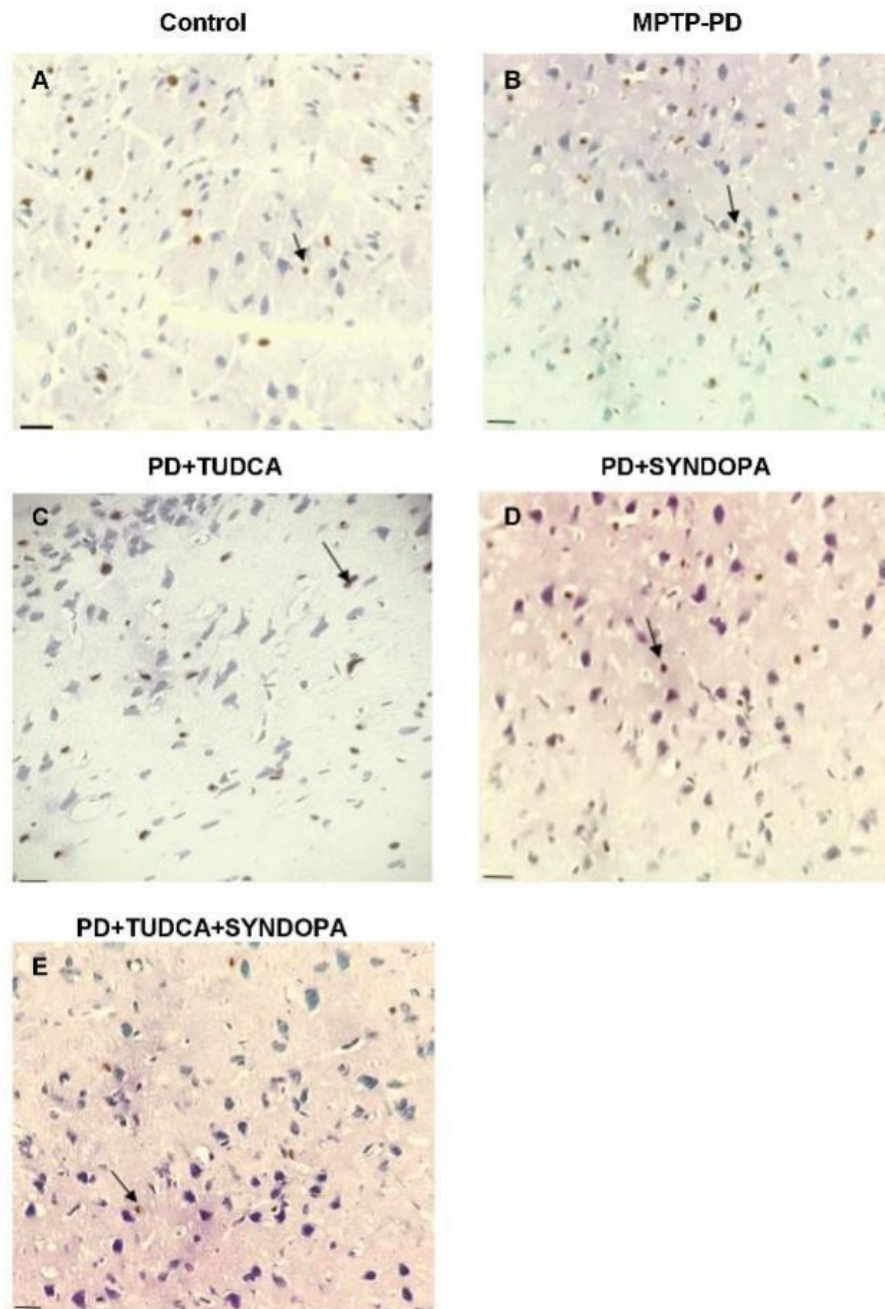


Figure S3. The representative immunostained sections depicts the expression of NF- κ B positive cells in the substantia nigra of control and experimental groups (Scale bar - 50 μ m, magnification-400x).

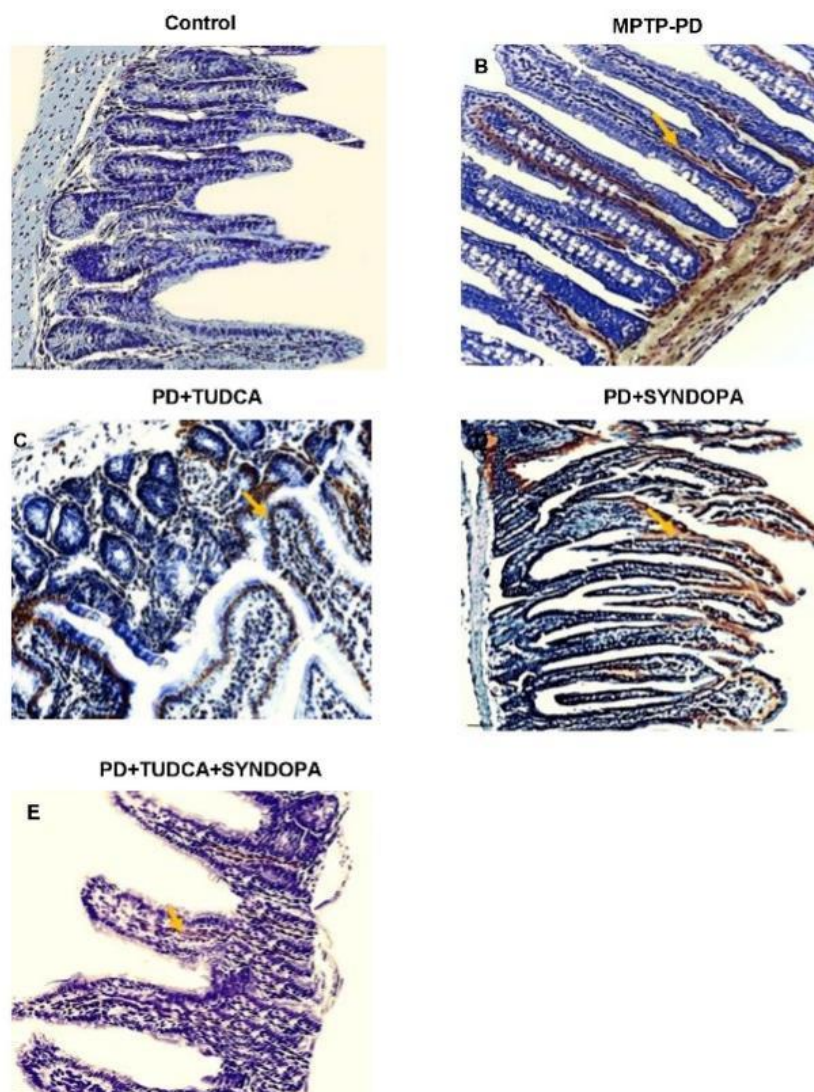


Figure S4. The representative immunostained sections shows the expression of α -synuclein protein expression in gut samples of control and experimental groups (Scale bar - 200 μ m, magnification-200x).

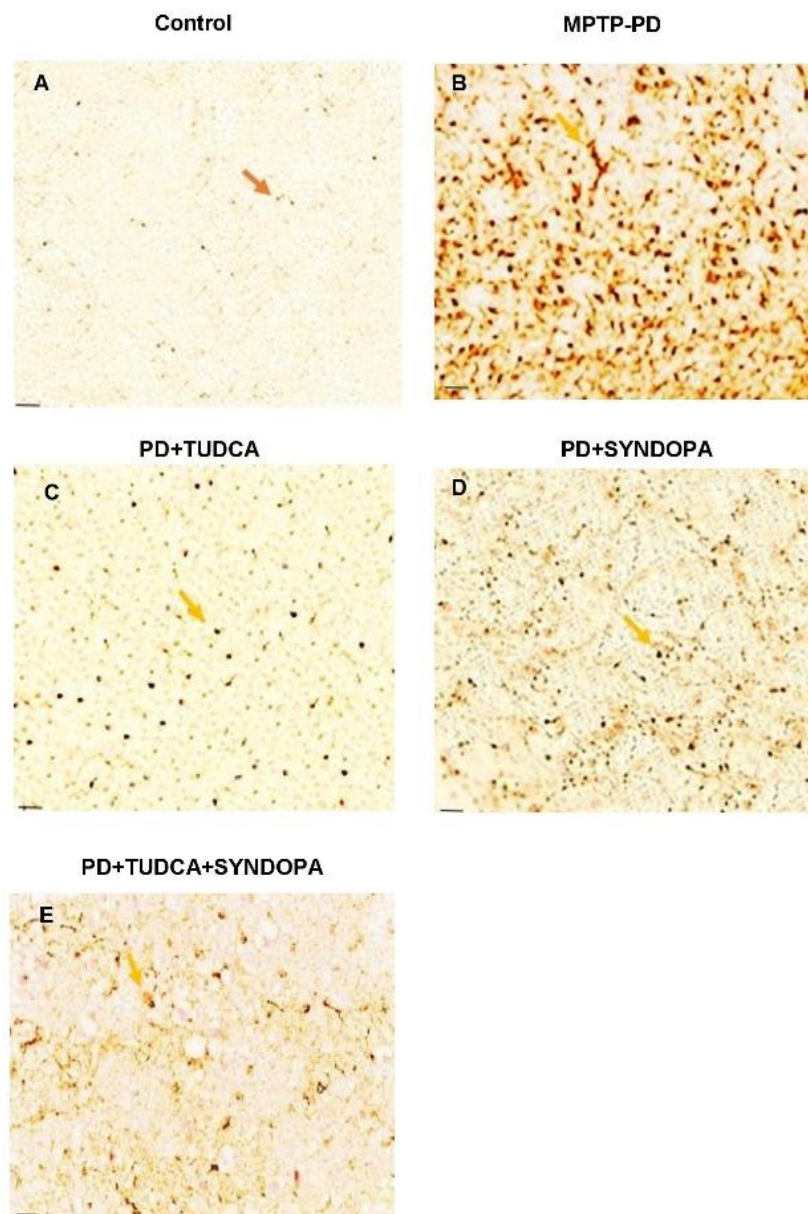


Figure S5. The representative images depict the immunoreactivity of α -synuclein positive cells in the substantia nigra of control and experimental groups (Scale bar - 200 μ m, magnification-200x).